

Profits Quick Start Guides



Practical Computer Solutions Inc.

*3082 Sandy Plains Road
Marietta GA 30066-4720*

Voice: 770-569-2900 Fax: 770-560-4446



Profits Provider Layout Creation

Overview

Profits stores its data files using Fujitsu's proprietary ISAM file structure. This type of file can only be read by programs written in Fujitsu COBOL. Because of this, you cannot access your Profits data using third party products such as Excel or Crystal Reports. This interface does not allow you to modify the Profits data, it is one way link.

PCS has developed a product, Profits Data Provider, that will remove this limitation. The Profits Data Provider lets third party products, such as Excel, access the data files enabling you to more easily manipulate your data.

The Profits Provider program is stored in the \PCS folder that is located on the same drive as your Profits programs. This is usually a shared drive on a server, but it could also be on your local hard drive.

Also stored in the \PCS folder is a subfolder called LAYOUT. This folder contains a .LAY file for each data file you can access. These LAY file informs the Profits Provider about the data structure of the file and what fields make up the file. These LAY files are provided by PCS for each of your Profits data files.

The last file that is contained in the LAYOUT folder is an INI file. This INI file stores the link between the physical data file and the record layout (LAY) file. Again this file will be provided by PCS with your Profits system.

FD Record

Fujitsu provides a utility called the Layout Definition. This program will read a COBOL FD file and create a Layout Definition file from it. This definition file is the format used by the Profits Provider.

Below is an example of a COBOL FD for our Salesman Master file. This file must be modified before it can be processed by the Fujitsu Layout utility.

```

000100*****
000200*   SALEF.FD   SALESMAN MASTER FILE   *
000300*****
000400 FD   SALEF.
041807*   LABEL RECORD IS STANDARD
041807*   VALUE OF ID IS "SALESMAN.FIL".
000700
001000 01   SALEF-REC.
001100      03   SALEF-KEY.
030904          05   SLSMN-NUMBER           PIC 999
001400      03   SALEF-DATA1.
001500          05   SLSMN-NAME             PIC X(25).
001700          05   SLSMN-COMM-PCT         PIC S999V99      COMP-3.
001900          05   SLSMN-CUR-ORDERS      PIC S9(5)         COMP-3.
002100          05   SLSMN-YTD-ORDERS      PIC S9(7)         COMP-3.
002300          05   SLSMN-CUR-DOL         PIC S9(7)V99      COMP-3.
002500          05   SLSMN-YTD-DOL         PIC S9(9)V99      COMP-3.
002700          05   SLSMN-CUR-COST        PIC S9(7)V99      COMP-3.
002900          05   SLSMN-YTD-COST        PIC S9(9)V99      COMP-3.
003100          05   SLSMN-CUR-COMM        PIC S9(7)V99      COMP-3.
003300          05   SLSMN-YTD-COMM        PIC S9(9)V99      COMP-3.
040192          05   SLSMN-COMMISSION-PCT PIC S999V99      COMP-3
040192                                     OCCURS 005 TIMES.
060797      05   SLSMN-COMM-PAY-TYPE PIC 9.
          88   SLSMN-COMM-DO-NOT-GEN     VALUE 1.
          88   SLSMN-COMM-PAY-BY-AP      VALUE 2.
          88   SLSMN-COMM-PAY-BY-PR      VALUE 3.
060797      05   SLSMN-COMM-PAY-NUMBER PIC X(8).
112900      05   SLSMN-LYR-ORDERS         PIC S9(7)         COMP-3.
112900      05   SLSMN-LYR-DOL            PIC S9(9)V99      COMP-3.
112900      05   SLSMN-LYR-COST           PIC S9(9)V99      COMP-3.
112900      05   SLSMN-LYR-COMM          PIC S9(9)V99      COMP-3.
052804      05   SLSMN-PEND-ORDERS        PIC S9(7)         COMP-3.
052804      05   SLSMN-PEND-DOL          PIC S9(9)V99      COMP-3.
052804      05   SLSMN-PEND-COST         PIC S9(9)V99      COMP-3.
052804      05   SLSMN-PEND-COMM         PIC S9(9)V99      COMP-3.
021509*      05   FILLER                  PIC X(20).
021509      05   SLSMN-TERRITORY         PIC X(05).
021509      05   FILLER                  PIC X(15).

```

First remove the FD (line 000400) from the file. Second change all hypens (-) to underscores (_). Also make sure no text is past column 72. Below is how the revised file should look. Make sure *not* to change your COMP-3 to COMP_3.

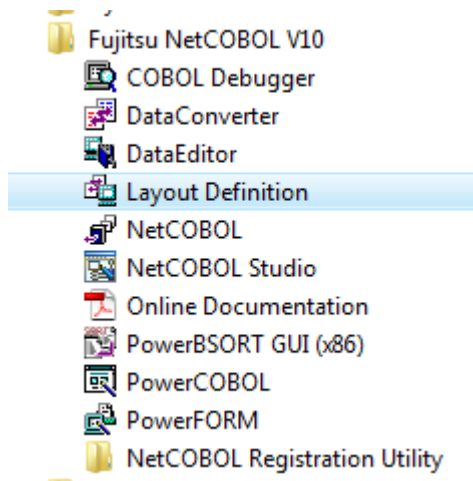
```

SALEF.FD - Notepad
File Edit Format View Help
000100*****
000200* SALEF.FD SALESMAN MASTER FILE *
000300*****
041807* LABEL RECORD IS STANDARD
041807* VALUE OF ID IS "SALESMAN.FIL".
000700
001000 01 SALEF_REC.
001100 03 SALEF_KEY.
030904 05 SLSMN_NUMBER PIC 999 .
001400 03 SALEF_DATA1.
001500 05 SLSMN_NAME PIC X(25).
001700 05 SLSMN_COMM_PCT PIC S999V99 COMP-3.
001900 05 SLSMN_CUR_ORDERS PIC S9(5) COMP-3.
002100 05 SLSMN_YTD_ORDERS PIC S9(7) COMP-3.
002300 05 SLSMN_CUR_DOL PIC S9(7)V99 COMP-3.
002500 05 SLSMN_YTD_DOL PIC S9(9)V99 COMP-3.
002700 05 SLSMN_CUR_COST PIC S9(7)V99 COMP-3.
002900 05 SLSMN_YTD_COST PIC S9(9)V99 COMP-3.
003100 05 SLSMN_CUR_COMM PIC S9(7)V99 COMP-3.
003300 05 SLSMN_YTD_COMM PIC S9(9)V99 COMP-3.
040192 05 SLSMN_COMMISSION_PCT PIC S999V99 COMP-3
040192 OCCURS 005 TIMES.
060797 05 SLSMN_COMM_PAY_TYPE PIC 9.
88 SLSMN_COMM_DO_NOT_GEN VALUE 1.
88 SLSMN_COMM_PAY_BY_AP VALUE 2.
88 SLSMN_COMM_PAY_BY_PR VALUE 3.
060797 05 SLSMN_COMM_PAY_NUMBER PIC X(8).
112900 05 SLSMN_LYR_ORDERS PIC S9(7) COMP-3.
112900 05 SLSMN_LYR_DOL PIC S9(9)V99 COMP-3.
112900 05 SLSMN_LYR_COST PIC S9(9)V99 COMP-3.
112900 05 SLSMN_LYR_COMM PIC S9(9)V99 COMP-3.
052804 05 SLSMN_PEND_ORDERS PIC S9(7) COMP-3.
052804 05 SLSMN_PEND_DOL PIC S9(9)V99 COMP-3.
052804 05 SLSMN_PEND_COST PIC S9(9)V99 COMP-3.
052804 05 SLSMN_PEND_COMM PIC S9(9)V99 COMP-3.
021509* 05 FILLER PIC X(20).
021509 05 SLSMN_TERRITORY PIC X(05).
021509 05 FILLER PIC X(15).

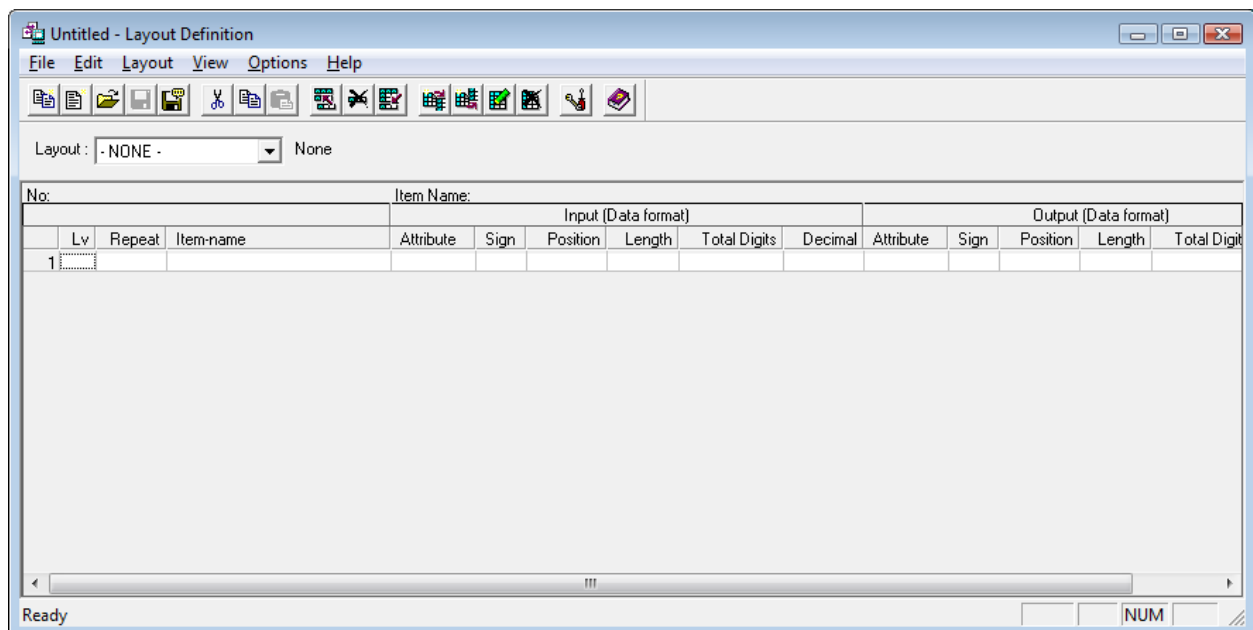
```

Layout Definition Utility

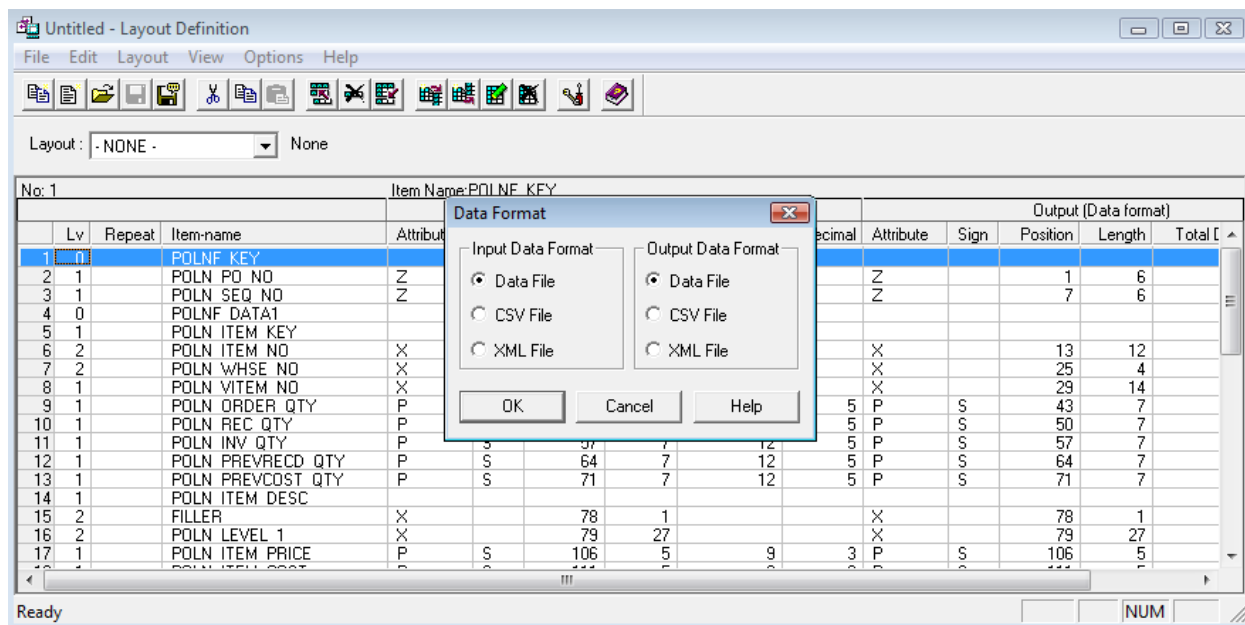
Once you have your FD files cleaned up you are ready to create the .LAY files that will be used by the Profits Provider. Start the Layout Definition utility from your Start button or browse to it in my computer. If you used the default folder during the installation of the COBOL, it should be located at C:\Program Files\Fujitsu NetCOBOL for Windows\DataTools\LAYOUT.EXE



Once the program starts you should see a screen similar to the one below. Click File > New From COBOL Library. Then browse to the location of your modified FD file.



You screen should now be populated with your data fields. In the popup window make sure that both the Input and Output formats are set to “Data File” and click OK. Now select File > Save As and save the file to the \PCS\LAYOUT folder.

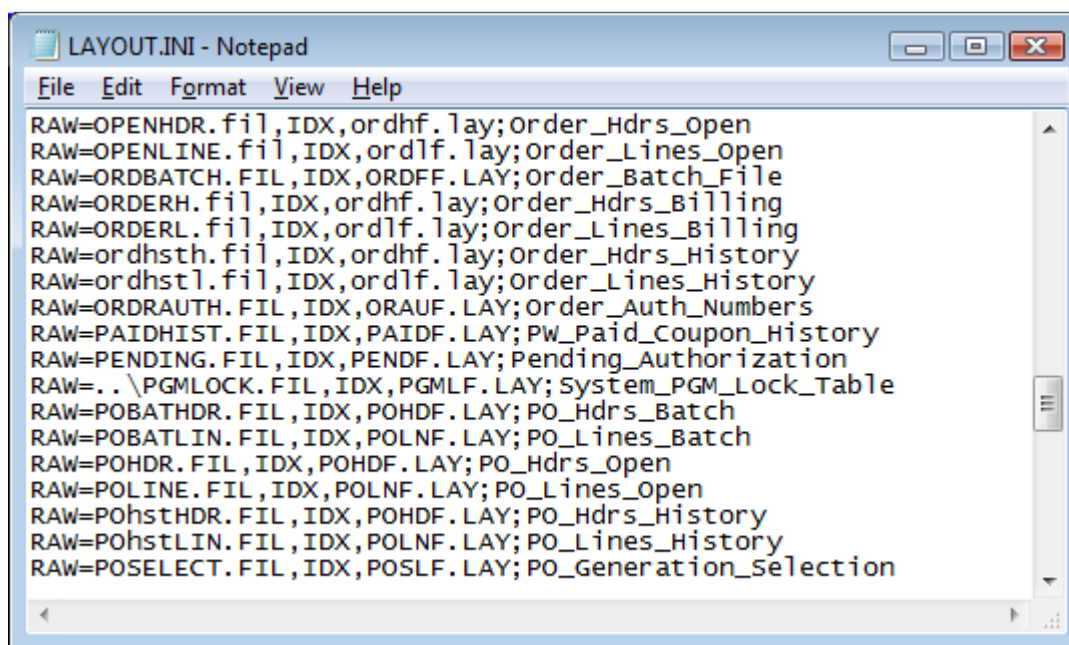


If this layout contains fields you do not wish accessible from Profits Provider they can be removed from the layout file. If the file contains date fields you should change the Attribute field to a J for Julian, D for MMDDYY defined as PIC 9(6) or M or MMDDYY defined as PIC9(6) Comp-3. These changes can be made using Notepad, WordPad or any other text editor you wish to use.

Layout INI File

Now that you have the .LAY files you need to tell the Profits Provider how to link them to the data files. This is accomplished using the LAYOUT.INI file which should be stored in the \PCS\LAYOUT folder along with the .LAY files.

This file will contain one line for each link between an LAY file and a physical DATA file. You can use the same LAY file to reference multiple DATA files. For example, we have our Billing Batch file, Open Orders File and Order History file. All of these files have the same layout but are store in different physical files. So we would use the ORDHF layout file and point it to our ORDERH.FIL, OPENHDR.FIL and ORDHSTHDR.FIL.



The format of the file, as you can see in the above screen shot is as follows:

RAW=physical filename,IDX,layout name;name displayed to user